



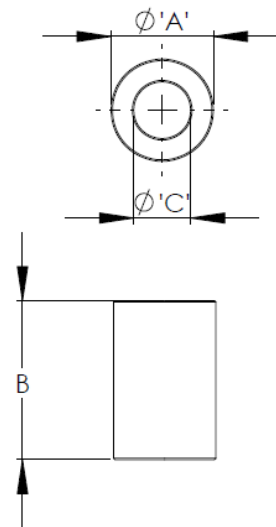
Product Description: Ferrite sleeve

Applications

Replacement ferrite sleeve, fitted within controller/programmer units for reducing the effects of electromagnetic interference induced into thermocouple input, compensating cables.

Dimensions

A = 16mm
B = 28mm
C = 9mm



Impedance (Ω)

25MHz: 104 Ω
100MHz: 178 Ω

